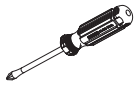


INSTALLATION MANUAL

HILUX N70 2005-2015

UTEMART FENDER FLARES BULL BAR-R60,R76

Required tools



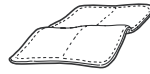
PHILLIPS SCREW DRIVER



WHITEBOARD MARKER



ISOPROPYL ALCOHOL



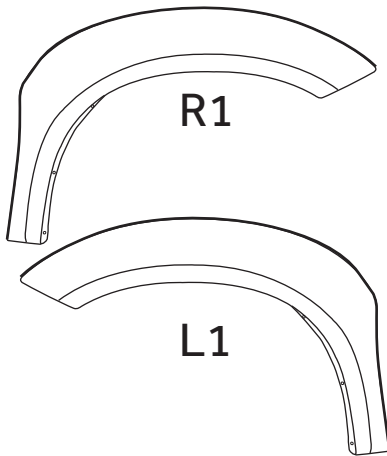
CLEAN CLOTH

CAUTION

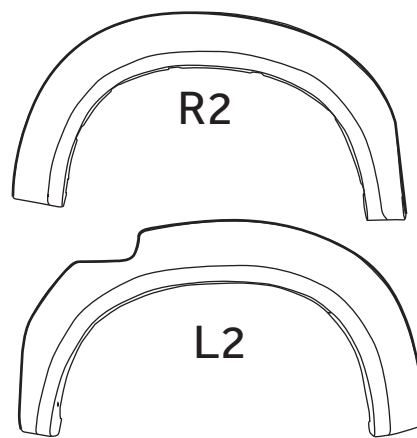
1. Do not clean parts or surfaces with anything but isopropyl alcohol because it may cause damage to parts / paint.
2. Be extremely careful not to damage the paint on the flares.
3. Before installation do not wax or polish the car, also all surfaces to be clean and dry.

WARNING: Ceramic coat may also cause adhesive not to stick. adhesive issues on ceramic coated cars is not covered under warranty.

Parts



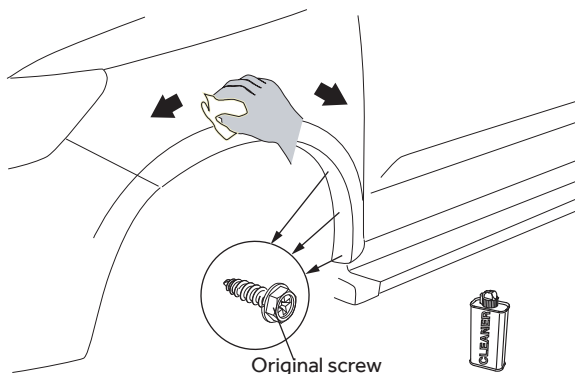
	BRACKET	4
	TAPPING SCREW 5x20	2
	CLIP SPRING #14	4
	TAPPING SCREW 6x20	16



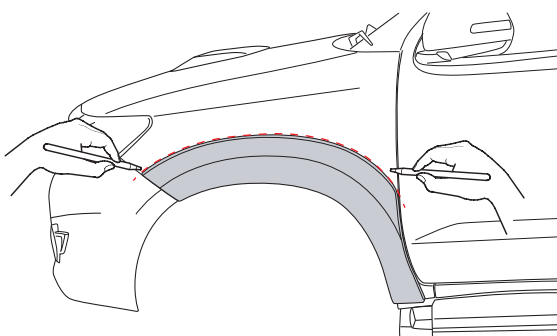
	TAPPING SCREW 5x20	4
	TAPPING SCREW 6x20	16

Front Flares

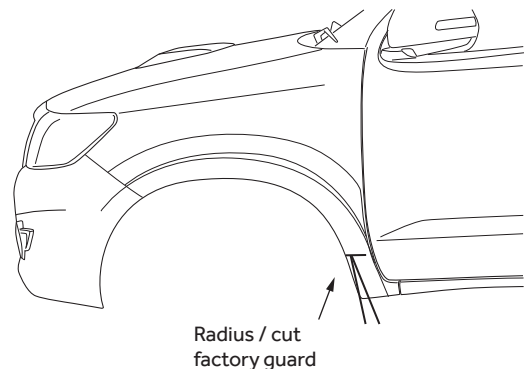
1. Take out the original screws. Clean the installation surface with alcohol



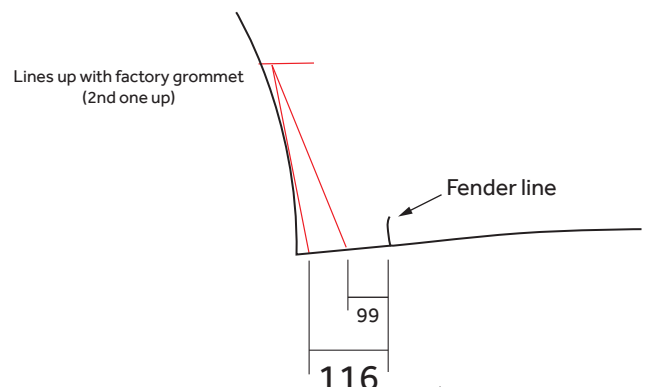
2. Place fender flares on the body, mark position. Also mark roughly where the guard cut will be on bottom corner



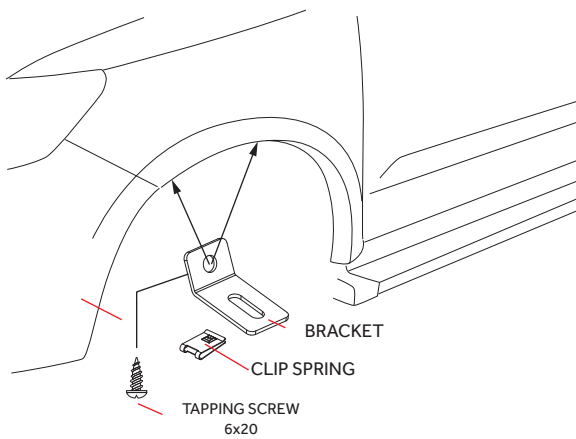
3. make guard cut. ideally 15-20mm. don't worry if you cut a little too much, the flare will hide it once fitted.



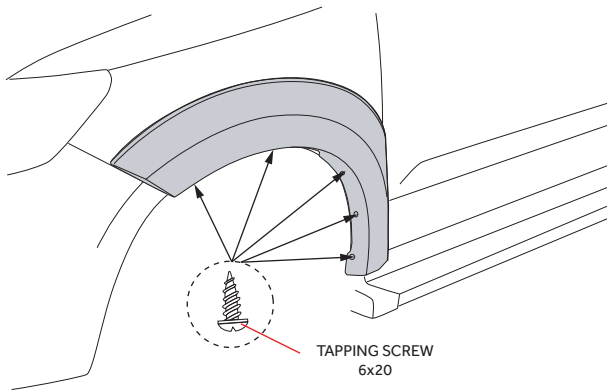
we would recommend a cut like this and then folding the guard back into itself.



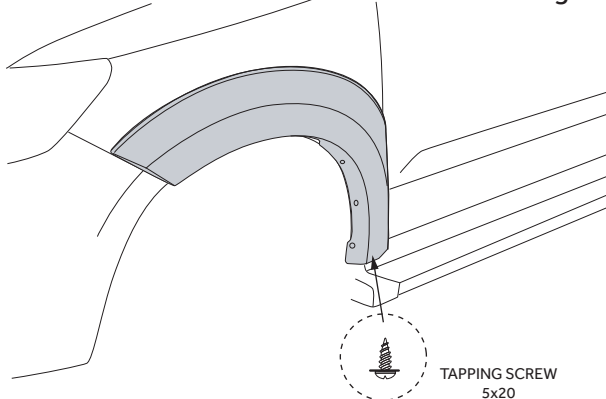
4 . Install brackets and clip spring.



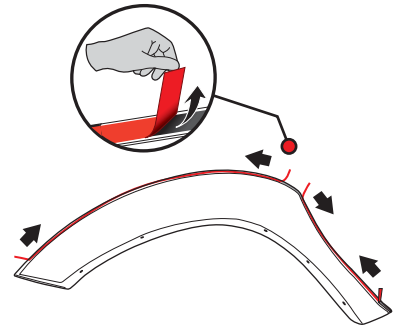
6. install flare, tighten all the hardware into clips. ensure the flare is in the correct position



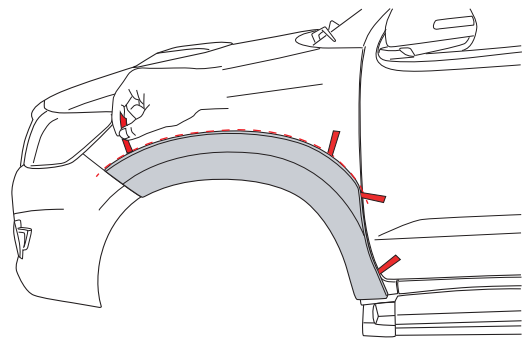
8. Once tightened up, drill pilot hole (in guard only) and install the bottom screw. There is a hole in the flare where it needs to go.



5. Make tabs off the rubber adhesive backing so you can get to them once flare is bolted up. (use primer on car side where rubber will stick just under your marked line)



7. work your way around taking the backing off the rubber, apply light pressure to ensure flare stays in the correct position. Check all hardware is tight



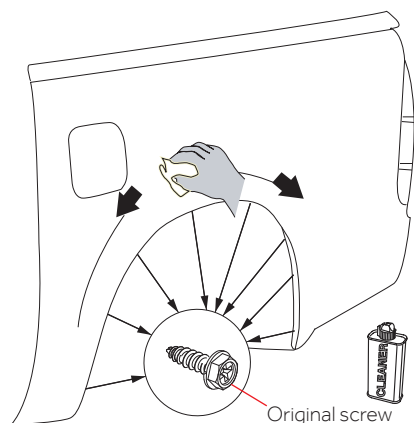
You have now completed installing the front flares. We recommend keeping the car dry for 12 hours after install. This allows the adhesive to properly bond /cure to the panel.

If you have any questions please call us on 0755203804

UTEMART
.com.au

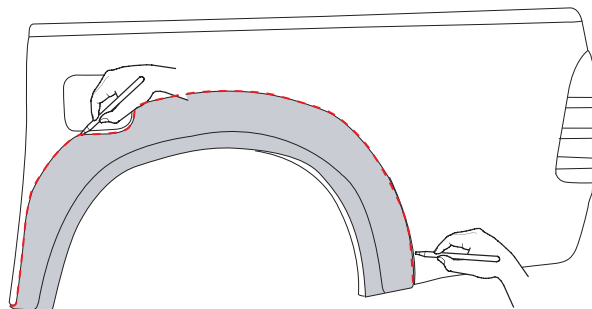
Rear Flares

9. Take out the original screw. Clean the installation surface with alcohol and wait until surface is dry.

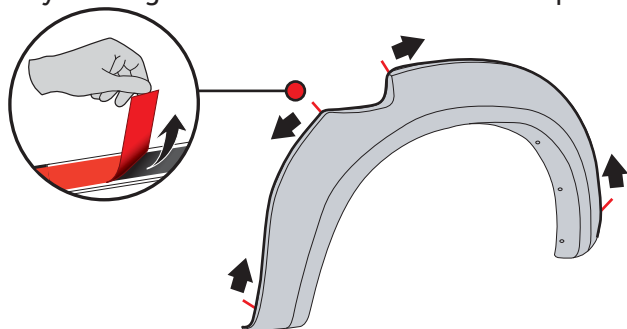


10. Place fender flares to the body. Mark where you will install the flare.

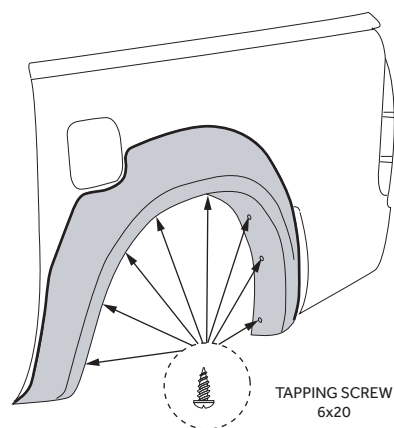
Use primer on the car side where the rubber adhesive will sit / stick.



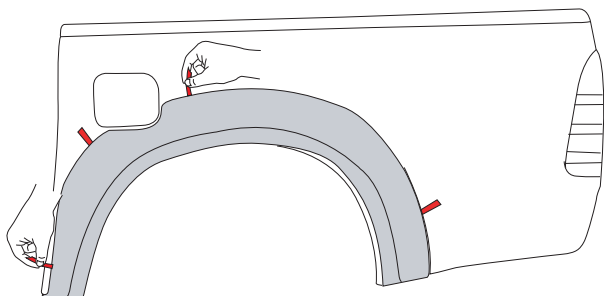
11. Make tabs off the rubber adhesive backing so you can get to them once flare is bolted up.



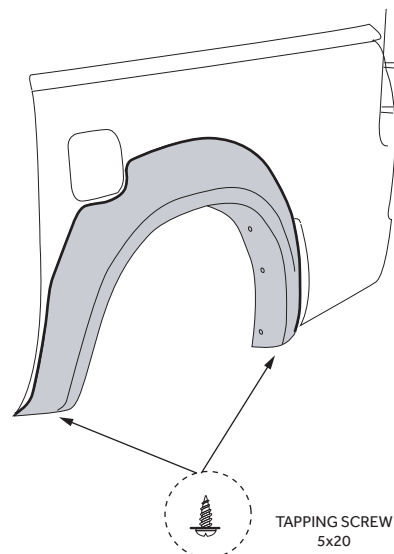
12. Secure the fender flare, tighten the screws.



13. work your way around taking the backing off the rubber, apply light pressure to ensure flare stays in the correct position. Check all hardware is tight.



14. Optional: Install to bottom screws.



If you have any questions please call us on 0755203804
Video Install also available on our Instagram / Youtube.